

AP Drawing Portfolio

Olivia Waddell

2021

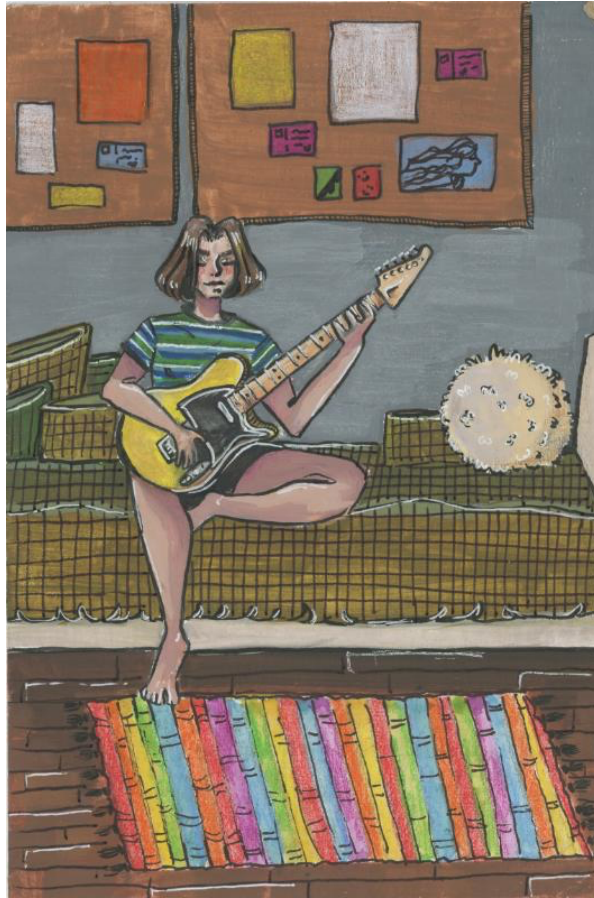


Image 1

Sustained Investigation

Height: 8.5 inches

Width: 5 inches

Material(s): gouache, black brush pen, magazine clippings, white gel pen

Process(es): I used a high amount of detail on a small canvas, but avoided making it look cluttered.



Image 2

Sustained Investigation

Height: 9 inches

Width: 7 inches

Material(s): watercolor pencil, black ink pen

Process(es): I sketched a main idea in pencil, then used watercolor pencils to figure out colors.

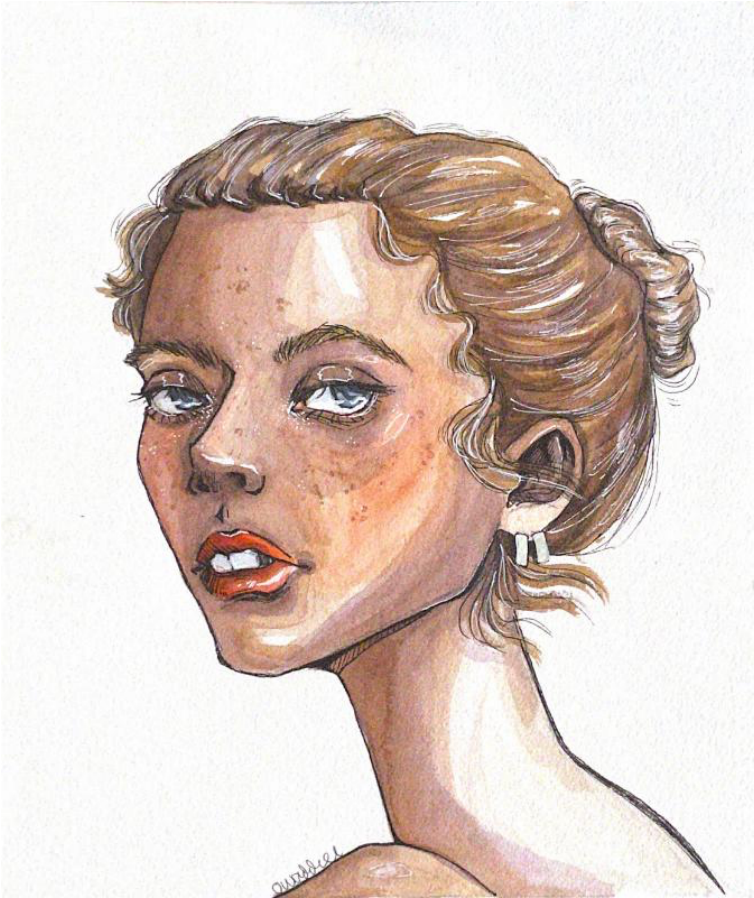


Image 3

Sustained Investigation

Height: 9 inches

Width: 10 inches

Material(s): watercolor, pencil, black ballpoint pen

Process(es): I used lots of washes of dull colors to build up to the final hues and values.

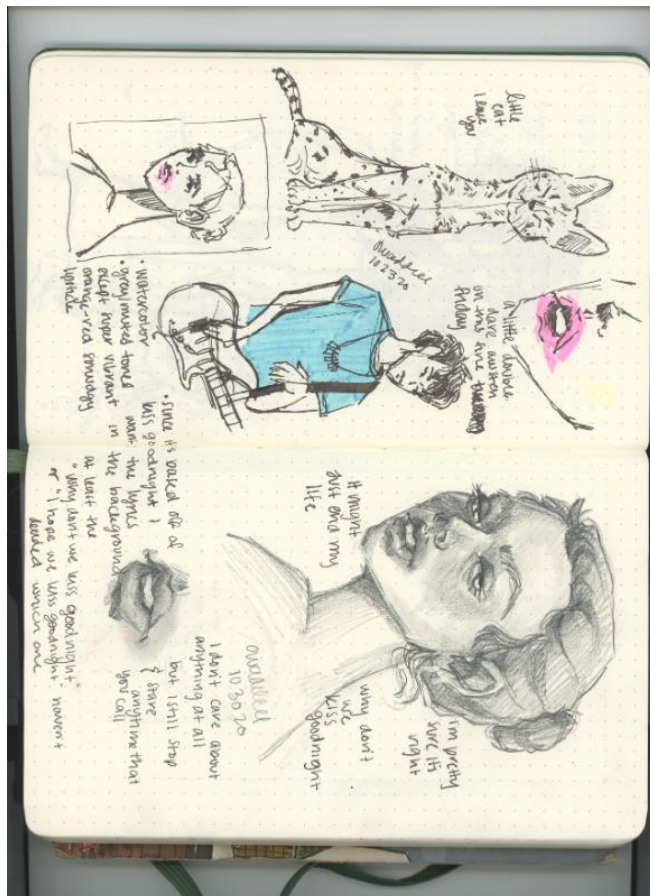


Image 4

Sustained Investigation

Height: 9 inches

Width: 7 inches

Material(s): pencil, black pen

Process(es): I sketched out a study of a reference photo, followed by concept planning.



Image 5

Sustained Investigation

Height: 11 inches

Width: 14 inches

Material(s): acrylic paint, colored pencil, canvas

Process(es): I used a green colored pencil for the sketch, which can still be seen through the acrylic sometimes.

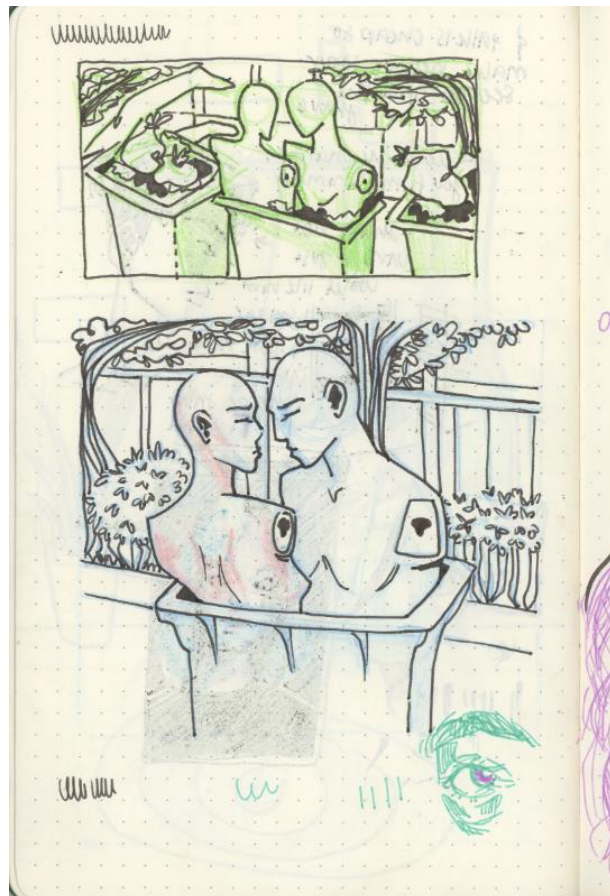


Image 6

Sustained Investigation

Height: 7 inches

Width: 4.5 inches

Material(s): watercolor pencil, black pen

Process(es): I used watercolor pencil to create an initial sketch, followed by black pen as line art.

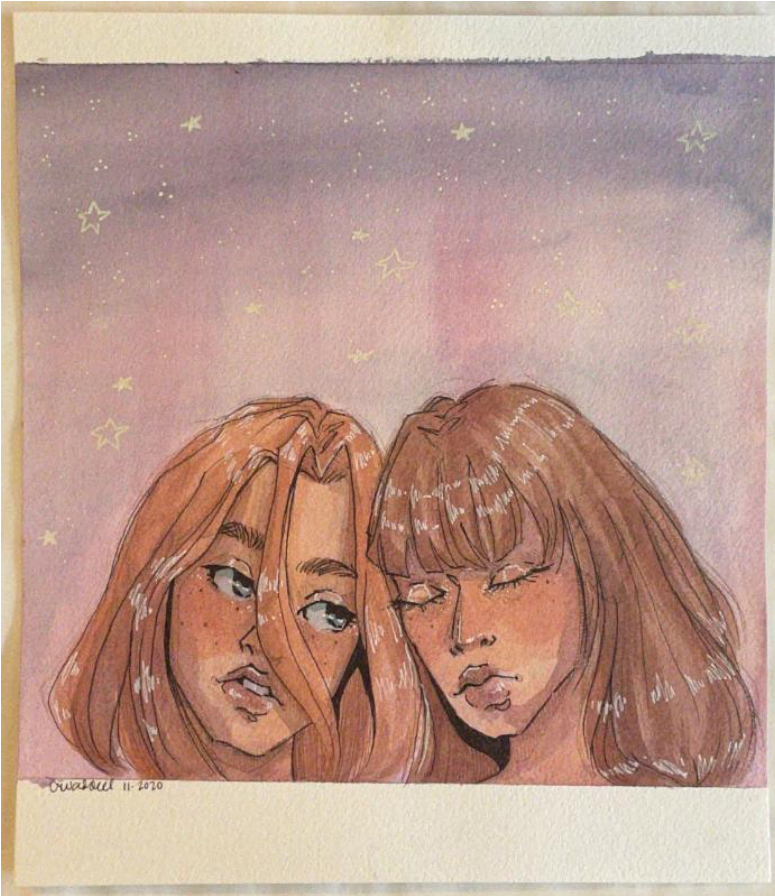


Image 7

Sustained Investigation

Height: 10 inches

Width: 9 inches

Material(s): watercolor, pencil, black pen, white gel pen

Process(es): I started off with a wash of purple to give a dreamy effect then continued with washes.



Image 8

Sustained Investigation

Height: 9 inches

Width: 7 inches

Material(s): pencil, pink ballpoint pen

Process(es): I did multiple reference studies in pink pen and created concepts for different pieces.

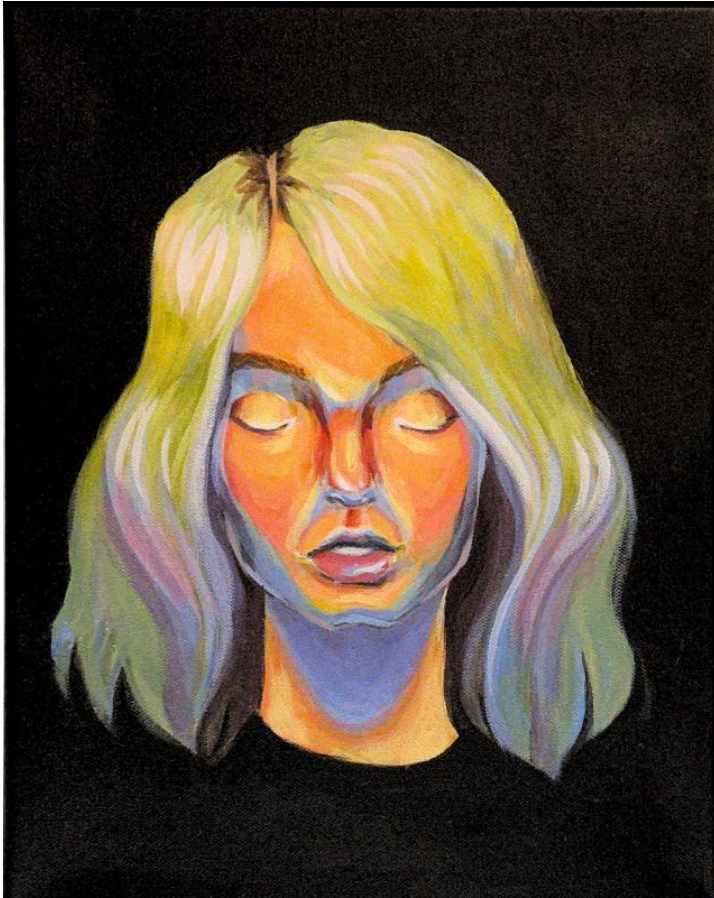


Image 9

Sustained Investigation

Height: 18 inches

Width: 12 inches

Material(s): acrylic paint, pencil, canvas

Process(es): I used a gray underpainting and slowly built up the bright colors overtop.



Image 10

Sustained Investigation

Height: 4.5 inches

Width: 7 inches

Material(s): highlighter, black ink pen

Process(es): This was a concept sketch, I sketched in black pen and figured out colors in highlighter.

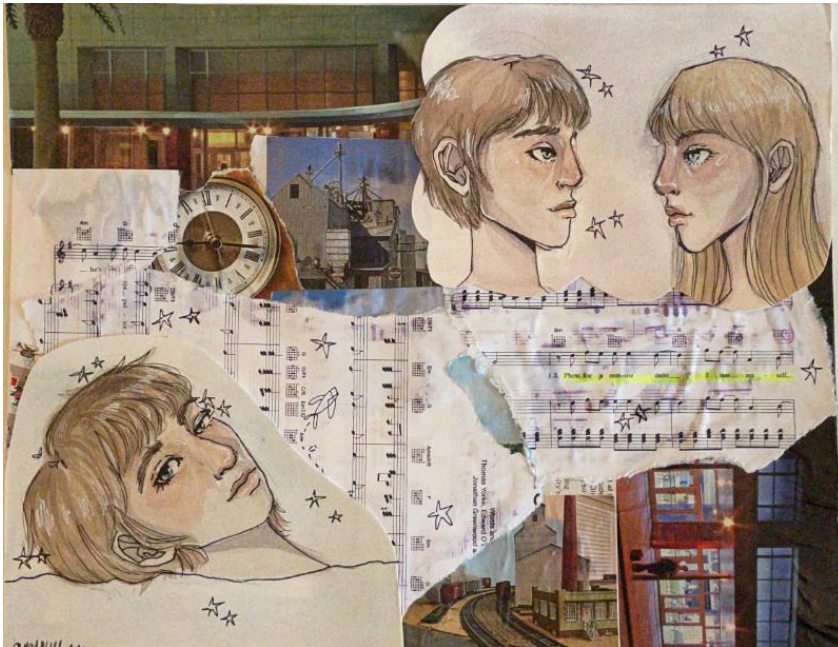


Image 11

Sustained Investigation

Height: 12 inches

Width: 18 inches

Material(s): watercolor, miscellaneous magazine and sheet music clippings

Process(es): I used watercolor to paint the two main pieces then used random clippings to fill in the rest.



Image 12

Sustained Investigation

Height: 9 inches

Width: 7 inches

Material(s): pencil

Process(es): I began planning the concept and composition of one of my pieces.

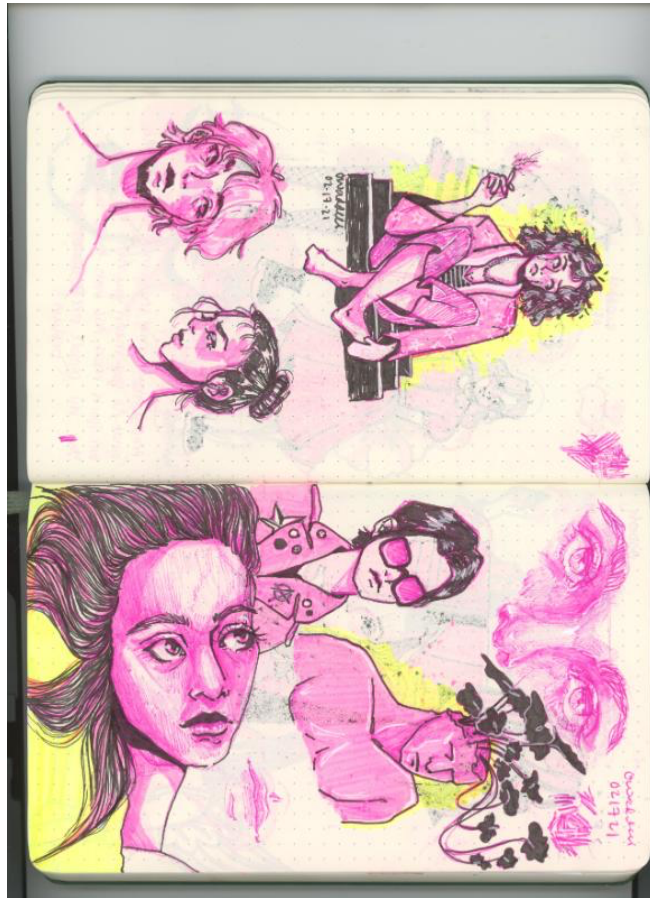


Image 13

Sustained Investigation

Height: 9 inches

Width: 7 inches

Material(s): pink ballpoint pen, black pen, yellow and pink highlighters, white gel pen

Process(es): I sketched everything on this page with pink ballpoint pen. This page is full of reference studies.



Image 14

Sustained Investigation

Height: 11 inches

Width: 8 inches

Material(s): watercolor, white gel pen, black pen, brown pen, pencil

Process(es): I did a pencil sketch, painted over it, and used varying line art for certain aspects of the piece.



Image 15

Sustained Investigation

Height: 9 inches

Width: 7 inches

Material(s): pencil, black pen

Process(es): I began planning a watercolor piece, based off of specific lyrics in a song.

Written Evidence

Sustained Investigation

Identify the question(s) or inquiry that guided your sustained investigation.

Describe how your sustained investigation shows evidence of practice, experimentation, and revision guided by your question(s) or inquiry.

Response:

1. How do romantic relationships and intimacy affect how art is created?
2. Does music impact how relationships and emotions are remembered?

My work explores the impact of emotional intimacy within a one-sided romantic relationship, the growth that occurs after, and how music can inform the emotions behind a relationship. Watercolor, gouache, acrylic, and collage were the mediums I used to illustrate feelings of euphoria, longing, and sadness. These emotions are indicative of the stages in a relationship. The first half of my portfolio reflects a past relationship and the emotional turmoil I dealt with afterwards, while the second half represents recovery and hope as I continued to move forward. My work portrays artistic and personal growth as well as a new sense of maturity. Music was fundamental to this growth. Listening to and playing it helped inform my emotions. I titled each piece after a specific song that inspired the visuals or was reminiscent of the main idea. Overall, this portfolio is a compilation of emotional timestamps within the last year that helped shape who I am, and will continue to affect who I become.



Work 1

Selected Works

Height: 11 inches

Width: 14 inches

Idea(s): I illustrated how relationships can be generalized as something toxic, usually due to trauma.

Material(s): acrylic paint, colored pencil

Process(es): I used a green colored pencil for the sketch, which can still be seen through the acrylic sometimes.



Work 2

Selected Works

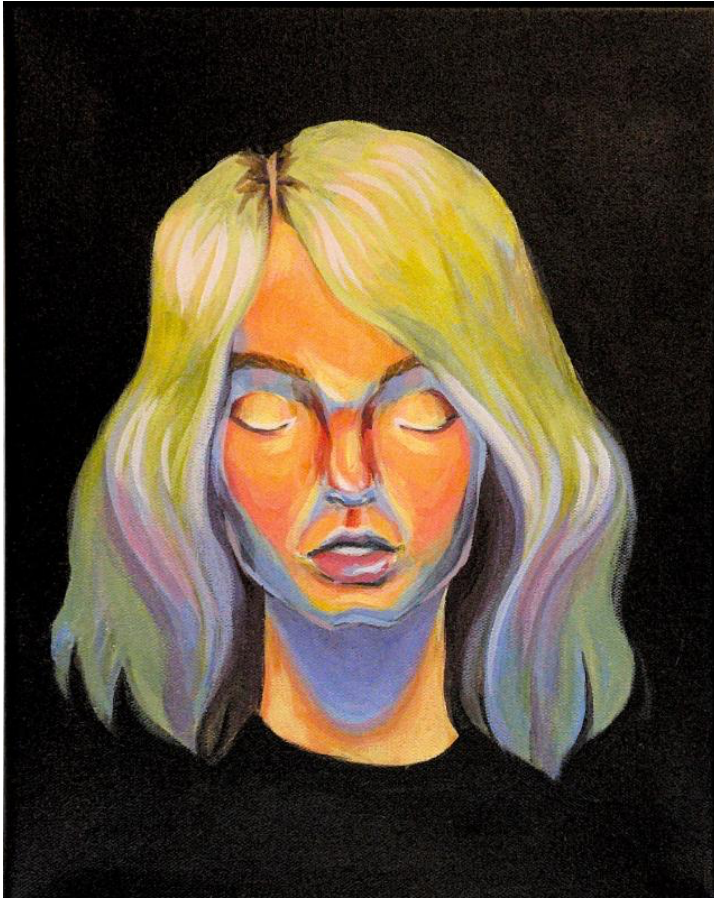
Height: 12 inches

Width: 9 inches

Idea(s): It is based off the song "Kiss Goodnight" by I Don't Know How but They Found Me.

Material(s): watercolor, black ballpoint pen, white gel pen

Process(es): I used washes of dull colors to build up to the final hues and values.



Work 3

Selected Works

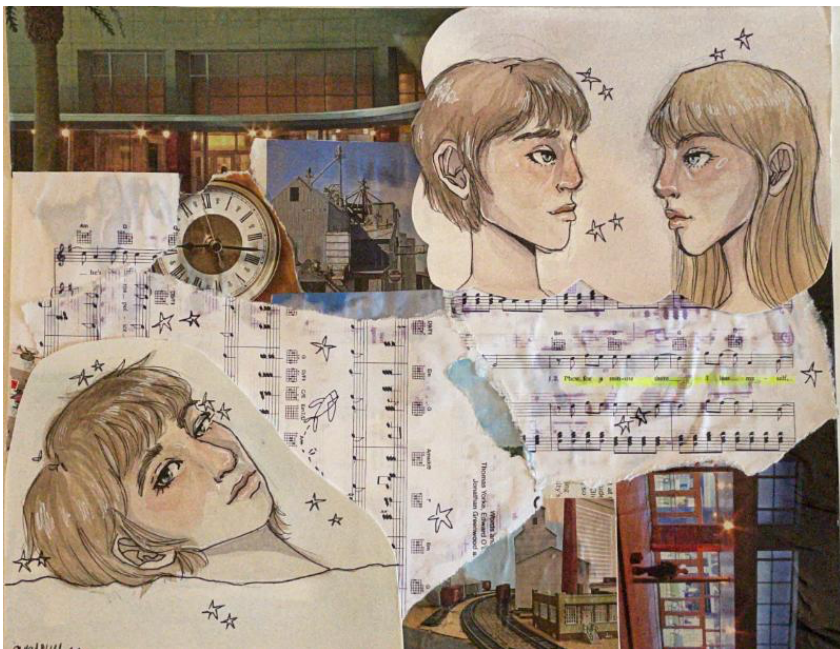
Height: 18 inches

Width: 12 inches

Idea(s): Depicts how, after a breakup, we are expected to move on quickly even when we are not ready.

Material(s): acrylic paint, pencil, canvas

Process(es): I used a gray underpainting and slowly built up the bright colors overtop.



Work 4

Selected Works

Height: 12 inches

Width: 18 inches

Idea(s): Illustrates the romantic fantasies we come up with involving people who we may not even love.

Material(s): watercolor, miscellaneous magazine and sheet music clippings

Process(es): I used watercolor to paint the two main pieces then used random clippings to fill in the rest.



Work 5

Selected Works

Height: 11 inches

Width: 8 inches

Idea(s): Based off of the song "Sober to Death" by Car Seat Headrest.

Material(s): watercolor, white gel pen, black pen, brown pen, pencil

Process(es): I did a pencil sketch, painted over it, and used varying line art for certain aspects of the piece.